

Drinking Water Mapping Application to Protection Source Water (DWMAPS)

Virginia Vassalotti, EPA Region 3

What is DWMAPS?

- An online mapping tool focused on drinking water data for source water protection
- Planning and assessment tool
- Emergency response tool
- Goal = To provide a nationwide online mapping tool for data critical to drinking water source protection

geopub.epa.gov/dwwidgetapp/

Key Data Sources

- All public information
 - **SDWIS** – Safe Drinking Water Information System
 - **FRS** – Facility Registry Service
 - **GRTS** – Grants Reporting Tracking System
 - **ECHO** – Enforcement and Compliance History Online
 - **WATERS** – Watershed Assessment, Tracking and Environment Results System
 - **ATTAINS** – Assessment, Total Maximum Daily Load (TMDL) Tracking and Implementation System

Other Useful Layers

- Drinking Water Intakes per HUC12
- Drinking Water Wells per HUC12
- Percent HUC12 in Source Water Protection Area (Surface)
- Percent HUC12 in Wellhead Protection Area (Ground)
- Sole Source Aquifers
- Aquifer Exemptions
- FEMA Flood Hazard Zone
- Land Use
- Underground Storage Tanks
- Estimated Private Wells
- NRCS National Water Quality Initiative
- Demographic Indicators
- Environmental Indicators
- And More!

DWMAPS Home Screen



Welcome to the Drinking Water Mapping Application to Protect Source Waters (DWMAPS)

DWMAPS is an online mapping tool to help you find information critical to protecting drinking water sources. Click one of the search options below to get started. Once you enter the map, icons at the bottom of the screen correspond to the search tools within this welcome screen.



Locate
Drinking
Water
Providers



Locate
Potential
Sources of
Contamination



Locate
Assessed
Waterways



Locate
Projects and
Source Water
Collaboratives

■ Open Map Layer List

[EPA Home](#)

[Drinking Water Home](#)

[Drinking Water Data and Reports \(SDWIS\)](#)

[Contact Us](#)

Main Functions (Widgets)

The screenshot displays the U.S. EPA DWMAPS web application interface. At the top left, there is a search bar labeled "U.S. EPA DWMAPS" with the placeholder text "Search Address, Place, or Lat/Long".

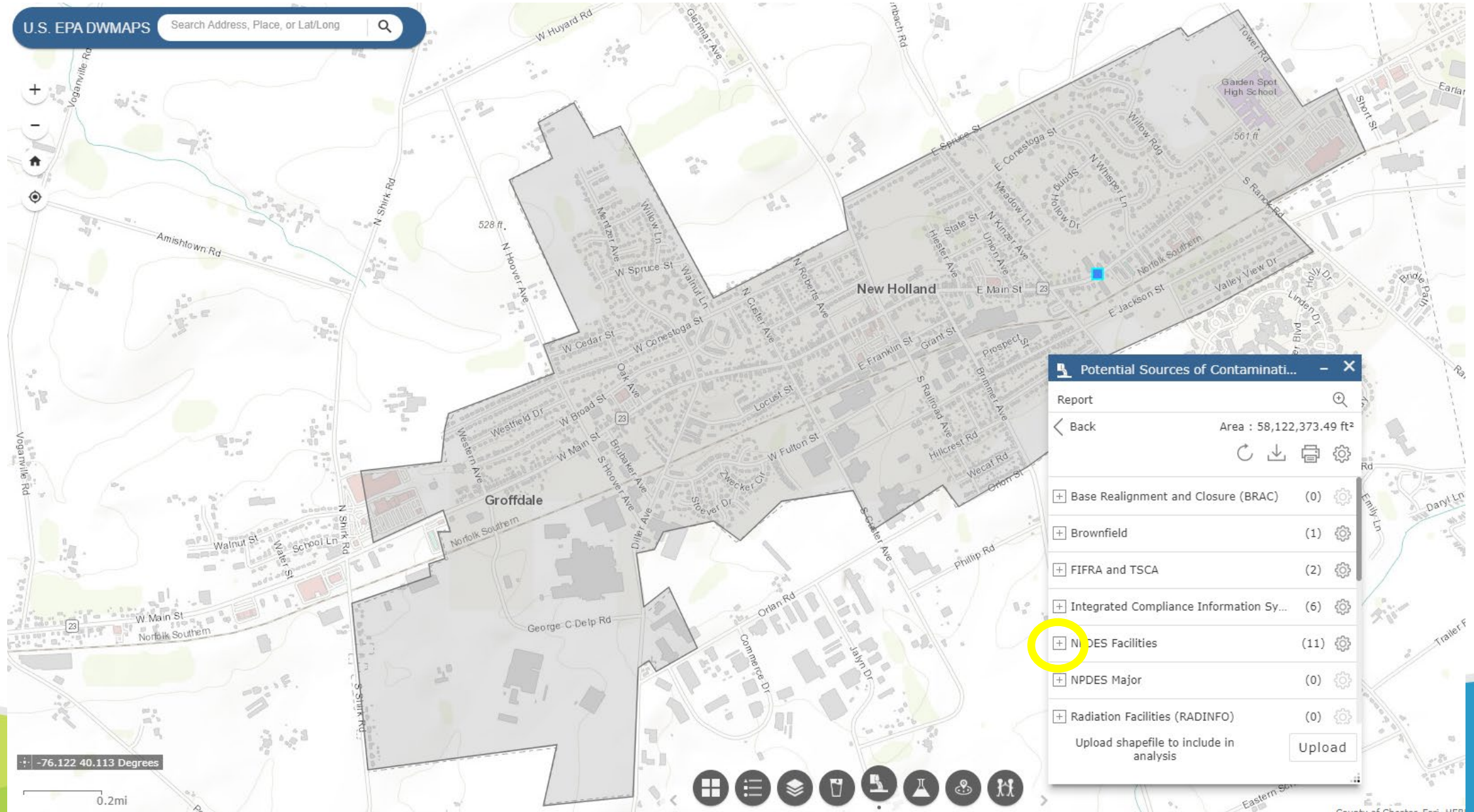
Four main widgets are overlaid on the map:

- Layer List:** A vertical panel on the left containing a list of map layers with checkboxes. The "Potential Sources of Contamination" layer is currently selected and highlighted.
- Basemap Gallery:** A panel in the upper middle showing various basemap styles such as "Bing Maps Aerial", "Bing Maps Hybrid", "Bing Maps Road", "Community Map", "Dark Gray Canvas", "Human Geography", "Human Geography", "Imagery", "Imagery Hybrid", "Light Gray", "National", and "Navigation".
- Assessed Waterways:** A panel in the upper middle with a search box "Enter Address, ZIP Or Place" and a slider for "Show results within 5 miles" (range 1 mile to 10 miles).
- Potential Sources of Contamination:** A panel on the right with a search box "Find address or place", a "Draw" mode selected, and a "Buffer distance (optional)" dropdown set to "Miles".
- Nearby Dischargers:** A panel on the right with a search box "Find address or place" and a slider for "Show results within 5 Miles" (range 0 to 30).

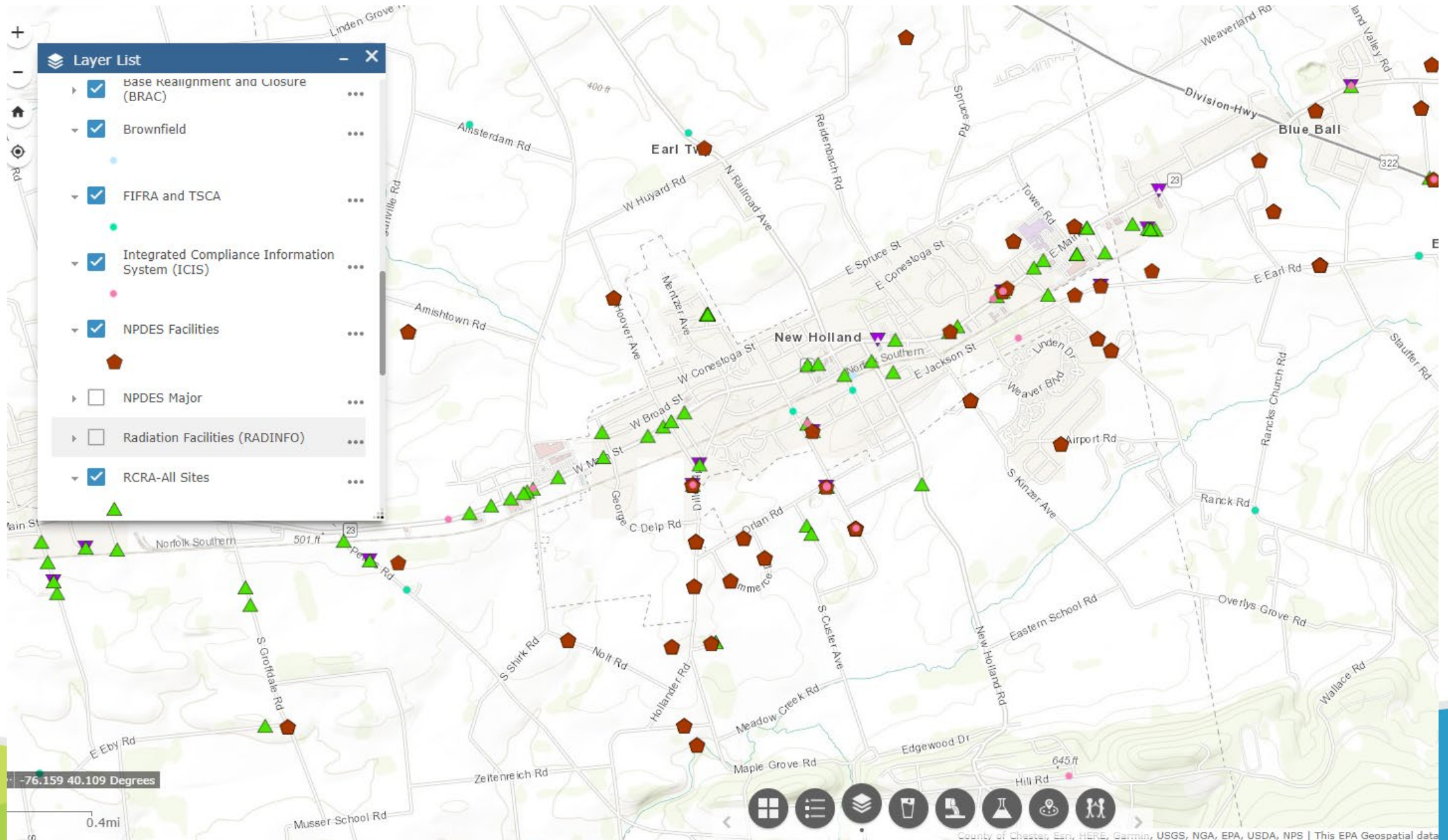
At the bottom of the map, there is a toolbar with icons for home, layer list, basemap gallery, search, and other functions. A scale bar indicates 0.2 miles. The bottom right corner features the Esri logo and the text "County of Chester, Esri, HERE, Garmin, USGS, NGA, EPA, USDA, NPS".

Four red arrows originate from the bottom toolbar and point towards the "Assessed Waterways", "Basemap Gallery", "Potential Sources of Contamination", and "Nearby Dischargers" widgets, indicating their primary functions.

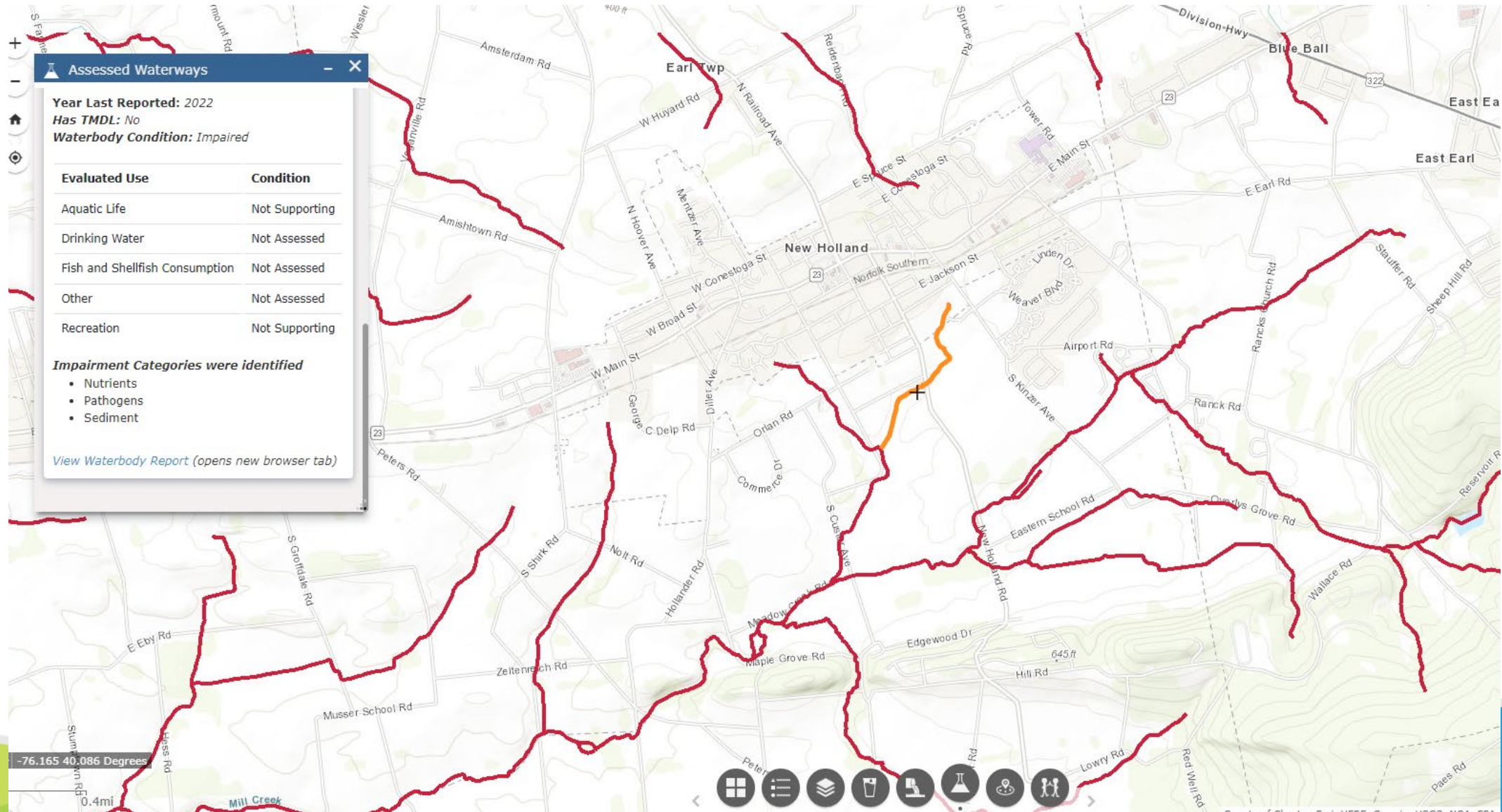
Potential Sources of Contamination – New Holland



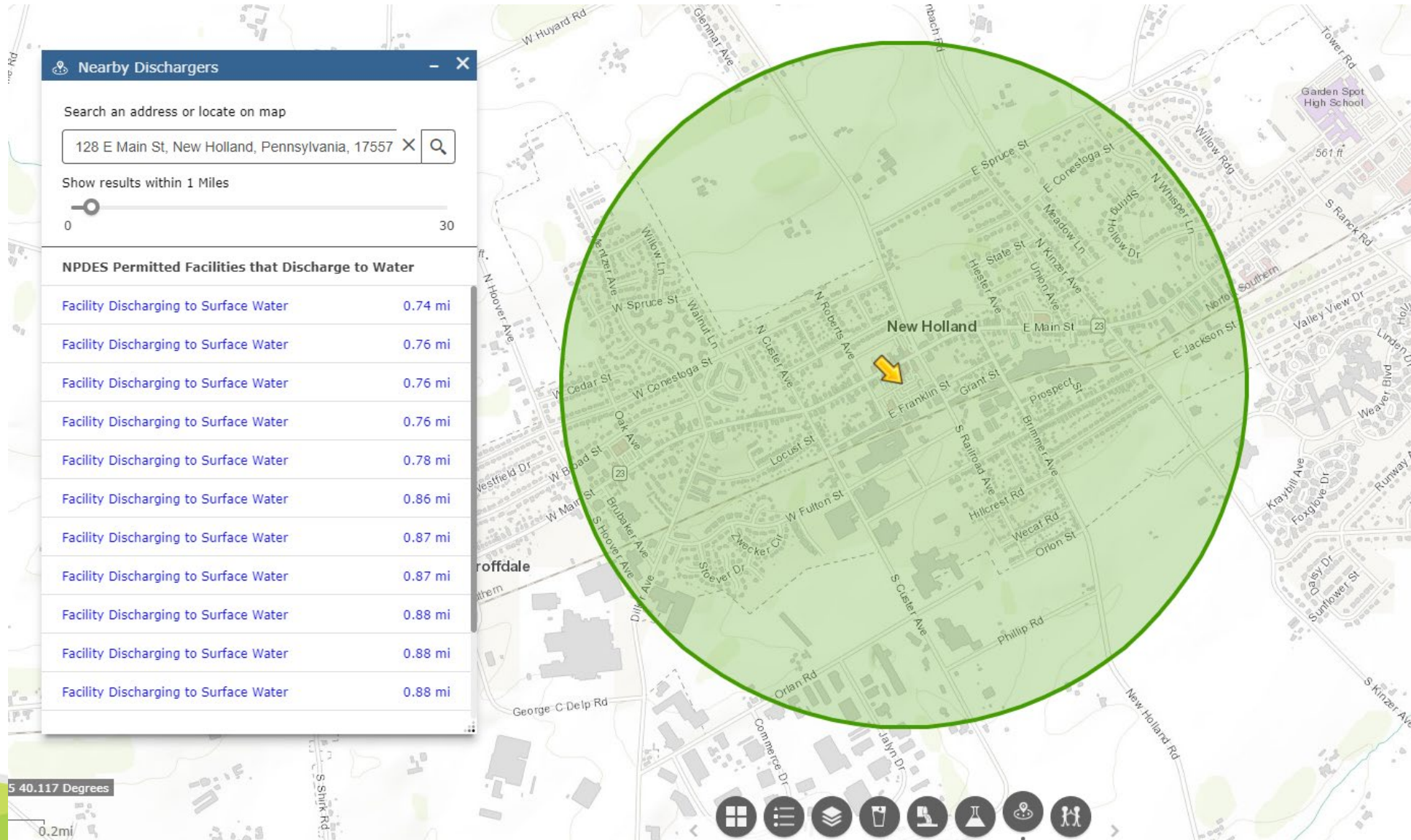
Layer List – New Holland



Assessed Waterways – New Holland



Nearby Dischargers– New Holland



Links to ECHO (Enforcement & Compliance History Online)

Environmental Media

Display all statutes (default)

Air

Water

Hazardous Waste

Drinking Water

Compliance History Timeframe

Monthly

Quarterly

Facility Summary



FLEUR DE LAIT EAST
 150 W JACKSON ST, NEW HOLLAND, PA 17557 ⓘ
FRS ID: 110000584118
EPA Region: 03
Latitude: 40.09812
Longitude: -76.08868
Locational Data Source: TRIS
Industries: Food Manufacturing
Indian Country: N

- Related Reports**
- I [Enforcement Case Report](#)
 - L [CWA Pollutant Loading Report](#)
 - E [CWA Effluent Charts](#)
 - X [CWA Effluent Limit Exceedances Report](#)
 - [View Envirofacts Reports](#)

Enforcement and Compliance Summary

Statute	Compliance Monitoring Activities (5 years)	Date of Last Compliance Monitoring Activity	Compliance Status	Qtrs with NC (of 12)	Qtrs with Significant Violation	Informal Enforcement Actions (5 years)	Formal Enforcement Actions (5 years)	Penalties from Formal Enforcement Actions (5 years)	EPA Cases (5 years)	Penalties from EPA Cases (5 years)
CWA	3	08/02/2022	No Violation Identified	5	5	6	2	\$14,702	--	--
RCRA	--	--	No Violation Identified	0	0	--	--	--	--	--

Regulatory Information

Clean Air Act (CAA): No Information
Clean Water Act (CWA): Minor, Permit Expired (PAR123509)

Other Regulatory Reports

Air Emissions Inventory (EIS): No Information
Greenhouse Gas Emissions (eGGRT): No Information

Virginia Vassalotti
vassalotti.virginia@epa.gov
215-814-2143