


## PA DEP - Emergency Response



1

### DEP Mission Statement

**The Department of Environmental Protection's mission is to protect Pennsylvania's air, land and water from pollution and to provide for the health and safety of its citizens through a cleaner environment. We will work as partners with individuals, organizations, governments and businesses to prevent pollution and restore our natural resources.**



2

## Regional Emergency Response Program

### Program Staff:

- Emergency Response Manager
- Emergency Response Coordinator
- Duty Officers
- Emergency Response Team members



3

## When Do We Get Involved?

- In response to calls received on the 24 hour hotline
  - Citizens, spill companies, fire chiefs, police, etc...
- We're requested to (PEMA, County, private citizen)
- When DEP programs request assistance



4

## Why Do We Get Involved?

- We're requested to (PEMA, County, Regulated Community, private citizen)
- To support our essential functions within the State Emergency Operations Plan
- There is an urgent need for DEP oversight in the field to protect the environment or the interests of the Commonwealth or the Department



5

## What to expect?

- Dispatch ER team member(s) to assess, document site, and coordinate between local responders, cleanup contractors and responsible parties
- Identify, contain and/or stop the release.
- Identify the Responsible Party
- Ensure that clean up operations are completed



6

## How Do We Help?

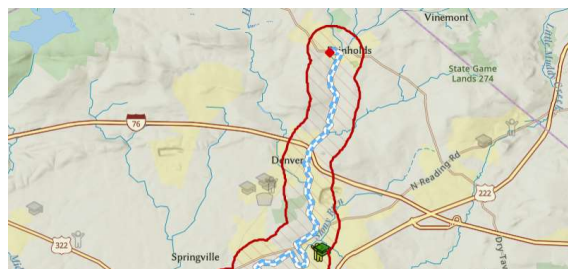
- Assist in performing operational needs
- DEP On-Site Presence
  - We can provide operational and technical assistance
  - Provide a knowledge of area and nearby facilities
    - Impacted facilities (i.e. water intakes)
    - Responsible Party
  - “Encourage” responsible parties to ensure prompt clean-up



7

## DEP Geographic Environmental Emergency Response App

- DEP ER Staff can plot incident on map and get list of impacted/potentially impacted downstream facilities



8

## What do we carry?

- Monitoring Equipment
  - Air, Radiation, Water Quality
- Absorbent materials
- Containment supplies
  - Pipe for underflow/overflow dam
  - Patching equipment
  - Containment pools
  - Instant underflow dams



**pennsylvania**  
DEPARTMENT OF ENVIRONMENTAL  
PROTECTION

9

## What do we carry?

- PPE
  - SCBA
  - Level B suits
  - Flame Resistant Clothing
- Sampling equipment
- Tracing dye
- Technical expertise and facility knowledge
  - Reach back capabilities



**pennsylvania**  
DEPARTMENT OF ENVIRONMENTAL  
PROTECTION

10

## How do you request us?

- Agency 24/7 number
  - Staffed by third party answering service.
- Duty Officer
  - Will return call, gather additional information and dispatch a team member.
- Response Time
  - Varies on time of day and location of available responders.

**1-800-541-2050**



11

## DEP Notification Requirements

- **Pennsylvania Clean Streams Law**
  - Any amount of a pollutant is discharged into either surface water or groundwater.
- **Pennsylvania Solid Waste Management Act**
  - Any spill of HAZWASTE to surface water or groundwater.
  - Any HAZWASTE Spill above Reportable Quantity
- **Pennsylvania Storage Tank Act**
  - Release from any underground and above ground tank above Reportable Quantity

\*\*\*Duty to report is on the Responsible Party and/or Property Owner\*\*\*



12

## DEP Notification Requirements

- Department encourages responders to report:
  - HAZMAT spills in excess of five gallons.
  - Petroleum spills more than five gallons with potential to pollute.
  - Air pollution incidents with release of toxic substance or smoke creates public nuisance.
  - Illegal or improper disposal of any material.
  - Release or spills created by responders
    - Firefighting Runoff
    - Firefighting foam use



13

## Stuff We Respond To

### Traffic Accidents

- Ruptured diesel tanks
- Milk spills
- Overturned tractor trailers
- Releases of cargo



14

## Stuff We Respond To

### Traffic Accidents

- I81 in Schuylkill County
- Snow squall event on 3/28/22.
- DEP assisted with assessment of Environmental issues
- Provided notification to area water suppliers
- Oversaw environmental cleanup



Source: The Morning Call



15

## Stuff We Respond To

### Heating Oil Spills

- Mostly residential
- Overfills, drips, disconnected fill pipes, catastrophic failures
- Impacts to soils and waterways



16



## Stuff We Respond To

### Fish Kills

- Real-time water quality monitoring
- Water samples
- Source identification



17

## Stuff We Respond To

### Sewer Overflows

- Wet and dry weather
- Impacts to local waterways
- Drinking water impacts
- Downstream notifications



18

## Stuff We Respond To

### Manure Spills



- Trace back to source
- Evaluate impact to aquatic life
- Take samples downstream
- Document for enforcement



19

## Stuff We Respond To

### Commercial/Industrial Fires and Incidents

- Runoff concerns – chemicals, hydrant water
- Air monitoring
- Downstream notifications
- Cleanup



20

## Stuff We Respond To

### Train Derailments

- Hyndman, Bedford County
  - Aug 2017
- Newberry Twp, York County
  - July 2021








21

## Stuff We Respond To

### Pipeline Releases

- Marklesburg, Huntingdon County
  - November 2019
  - 27,300 gallons of gasoline released potentially released
  - Installed underflow dams and evaluated water supplies



22

## Stuff We Respond To

### Radiation Incidents

- January 2017
- PA Turnpike
- Auto fire involving radioactive medical products



23

## Stuff We Respond To

### Water Tampering Events

- Suspected or Confirmed
- Emergency samples



24

## What do we expect from you?

- Confirmation and details of impact to your system
- Actions to protect your source water
- Public Notices – conversation, Do Not Use, etc.
- Sampling
  - Potential split sampling with DEP
  - Ongoing process until threat has been eliminated
- Work with DEP to become fully operational again
  - Potential decontamination of plant and/or system.

25

## Dover Township Tank Incident


- 10/19/2017: Authorities found that tank had been accessed and climbed
  - Unknown impact to water system
  - DEP collected samples and determined there was no threat

### Man allegedly trespassed onto property of water tower in Dover Township

YORK COUNTY — A 23-year-old man faces charges after he allegedly trespassed onto the property of a Dover Township Water Authority water tower, according t...



26




**Cumberland Perry Area  
Technical and Career Center**

Heating Oil Release to the  
Conodoguinet Creek

27

**October 17, 2023**

- 0800 – Call to ER Hotline began
  - CWP began to respond
- 0830 – PA American Water notified DEP
  - Dispatched additional DEP Staff
- 1100- Identified source of releases as a UST of heating oil. Spill up to 9100 gallons.



28

## Impact to Conodoguinet Creek



29

## Cumberland Perry Technical and Career Center



30

## Impact to Retention Pond Area



31

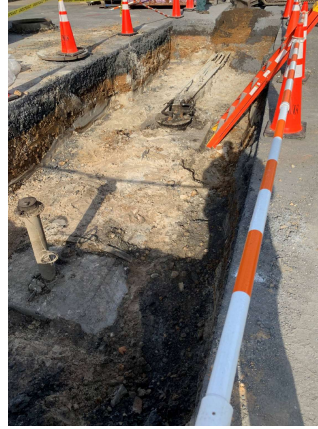
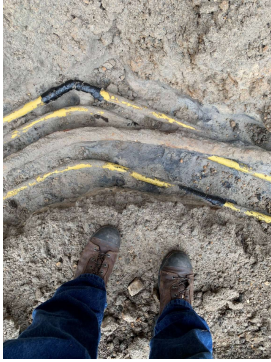
## Discharge to Conodoguinet Creek



32



## Cause of the Release




33

## Drinking Water Impacts

- Intake boomed
- DEP Conducted sampling at intake
- Water conservation notice
  - Approximately 42,000 people
- Plant had to be cleaned



34



**Walt Bair**  
**Environmental Emergency**  
**Response Manager**  
[wbair@pa.gov](mailto:wbair@pa.gov)  
**Desk: 717-705-4741**

**24 hr. number: 1-800-541-2050**