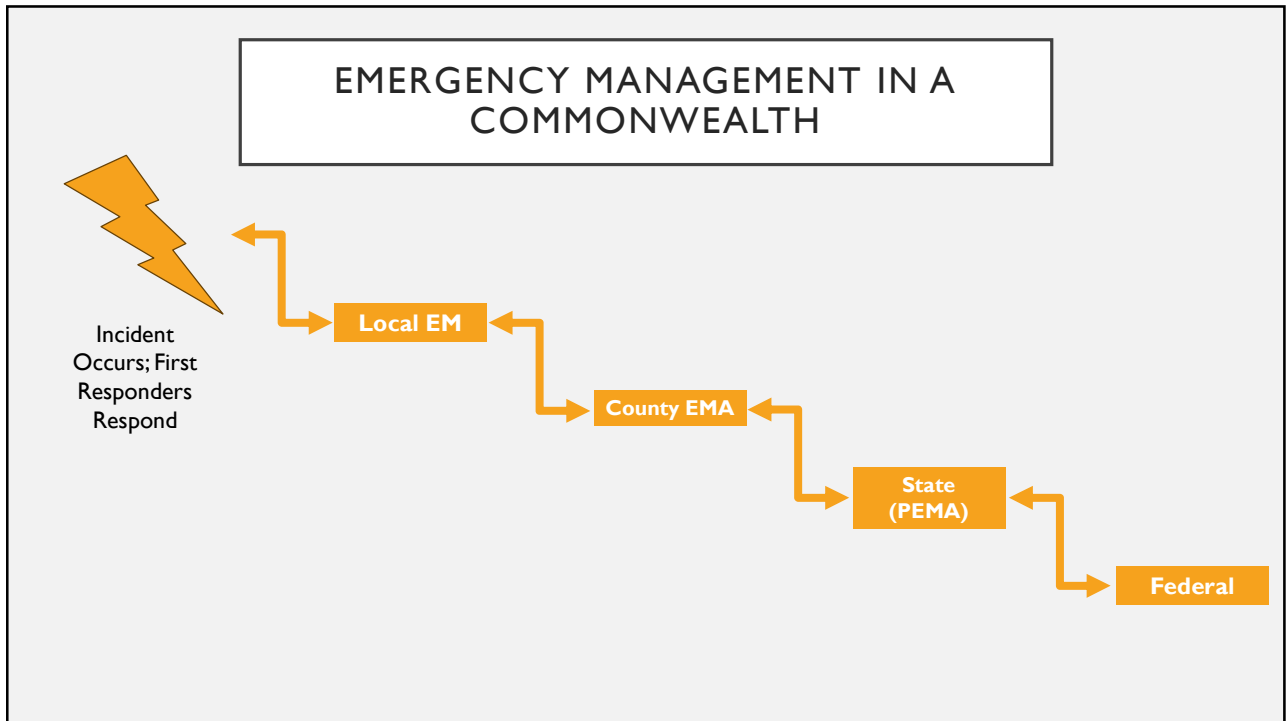


Zach Gibbons  
Hazardous Materials Admin  
Lancaster County Emergency Management Agency

# COUNTY PARTNERS: WHAT TO EXPECT IN A WATER OR HAZARDOUS MATERIALS EMERGENCY.

1



2

## WHAT DOES COUNTY EMA DO?

Lancaster EMA can assist with:

- Staff
- Stuff
- Space
- Structure
- System



3


## HOW DOES THIS WORK?

- In a potential water emergency, County EMA would make a notification to the Local EMC and the state.
  - County EMA will take guidance from Local EMC on support functions and unmet needs.
  - If the incident is a potential environmental hazard and affects the wells, County EMA will notify ECTWSA of the threat for follow-up.
  - If additional support is needed, County EMA will support it in any way needed.
- If there is a need for the hazardous materials team to be dispatched, County EMA will support the response with at least one on-scene representative.

4

## MASS NOTIFICATION

- Lancaster County has just purchased a mass notification system that will more consistently provide notifications to water authorities in the event of a potential contaminant in a well location.
- The public can also be notified if a shelter-in-place order or other notification needs to be sent out.

Sign up for public notifications here: 

5



## Questions?

Zach Gibbons  
Hazardous Materials Administrator  
Lancaster County Emergency Management Agency  
E: [zgibbons@lancastercountypa.gov](mailto:zgibbons@lancastercountypa.gov)  
O: 717-664-1204  
C: 717-286-6904

6